

EN PETI-100

PetiGIO



Peti-to-Eat

Automatic pet feeder

USER MANUAL

Read the Manual Carefully before Using the Product

Safety Instruction

Children must be accompanied by adults when using the device.
Do not use the feeder for pets which cannot reach the food tray or have physical disabilities.

Do not immerse the base part in water, as that would damage electronic components such as the control panel.

Do not put any foreign objects into the pet feeder.

Do not put canned or wet food into the feeder.

Do not disassemble the equipment by yourself.

Do not modify the pet feeder.

If the device does not work or its accessories are damaged, do not try to repair the pet feeder by yourself – instead, contact the seller.

Make sure that the feeder is unplugged and the power is off when the device is not in use or during cleaning.

If the plug is damp, turn off the power in the socket and do not attempt to unplug the power cord.

Notice

Purchase a hard plastic protector from a hardware store to protect plugs and power cords to prevent your pet from damaging the accessories.

Do not place the pet feeder in a high temperature environment. The temperature should be within the range of - 10°C-40°C.

Use alkaline Size D battery for power supply.

Do not use rechargeable batteries.

Check the battery regularly. Replace the battery before going away for longer periods of time.

Do not lift the pet feeder directly by the cover, food bucket and food tray. Hold the base with both hands to lift and carry the device while keeping it in an upright position.

Only use the device with dry food with a diameter of 2-12 mm. Larger food may get stuck or block the food outlet.

Read all the notices on the packaging and manuals carefully.

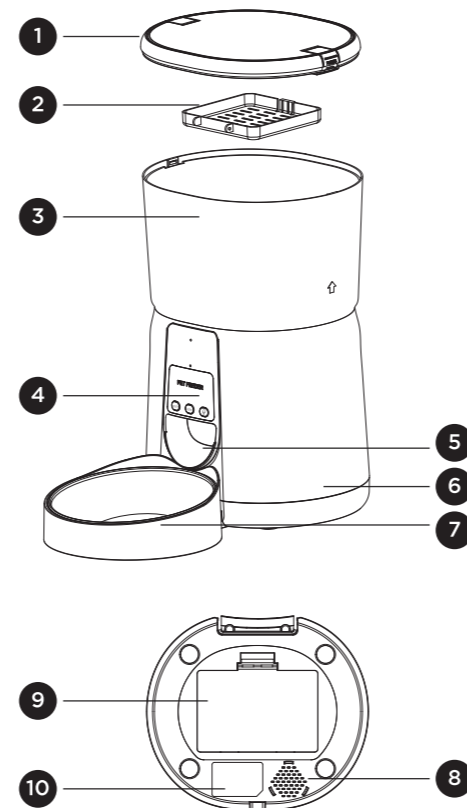
Product Image

Front View

1. Food Tank Lid
2. Desiccant Cartridge
3. Food Tank
4. Control Panel
5. Food Outlet
6. Body
7. Food Bowl

Bottom View

8. Speaker
9. Battery Compartment
10. DC Interface



Button Description

RECORD Recording button: Long press for 1s until you hear a "di" sound and start recording. The recording time does not exceed 10s. After you release the button, you will hear a "didi" sound, which indicates that the recording has been saved.

DELETE Delete recording: Long press for 1s until you hear a "di" sound, then release immediately, then you hear a "didi" sound to end the recording. (It is actually used to record over the old recording)

RESET Reset (switching to the network configuration mode): When the power is turned on and the network is not configured, the blue indicator flashes quickly by default (Wi-Fi quick connection configuration mode), press and hold for 7 seconds until you hear three beeps. The red/blue indicator is always on for 6 seconds and then switches to slow flashing (hotspot network configuration mode). Repeat this to switch between the two network modes.

FEED FEED: Manual feeding: Short press to serve 1 portion, and the recording will be played once.

LOCK/UNLOCK lock/unlock: in the unlocked mode long press for 6 seconds and the red indicator light will flash twice and lock the machine, then long press again for 6 seconds and the red indicator light will flash two times to unlock. In the locked mode, you can press and hold the RESET button to restore the factory settings.

Indicator light (blue light)

Fast flashing: flashing twice in 1 second, Wi-Fi quick configuration mode

Slow flashing: flashing once every 3 seconds, AP hotspot network configuration mode

Continuous light: The network connection is successful

Power on: Wi-Fi quick connection/AP mode switch: always on for 6 seconds

Indicator light (red light)

Flashing: abnormal detection of limit reached (motor does not rotate)

Lock/unlock: flashes twice

Power on: Wi-Fi quick connection/AP mode switch: always on for 6 seconds

Cleaning and Maintenance

Clean the feeder regularly to keep your pet healthy.

When the device starts to get dirty and a lot of loose food in the food tank falls through, you can remove the food cover to clean it.

Clean the feeder base and the control panel with a soft, damp cloth.

Do not immerse these parts in water.

Do not put the device in the dishwasher, otherwise it will be permanently damaged!

Components

After opening the package, confirm whether the machine is in good condition. Refer to the list to confirm whether all accessories have been provided.

Feeder x1

Power adapter x1

Power Cord x1

User manual x1

Specification

Food Tank Capacity: 3.5L

Power supply: DC 5V/1A power adapter; 3pcs alkaline D Size batteries

Power adapter: AC110-240V input, DC5V output

G.W: 1.88 kg

Size: 19.5 x 19.5 x 31 cm



Instructions

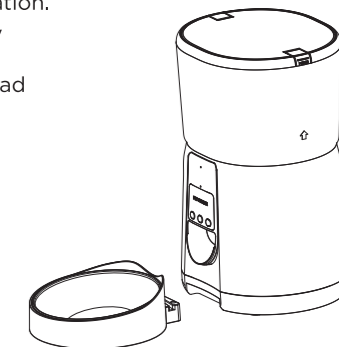
01 | Installation

Remove the feeder from the box.

Place the feeder in a suitable location.

Align the bulging of the food tray with the holes in the base.

Hold the feeder by the base instead of any other parts.



02 | Connect the power supply

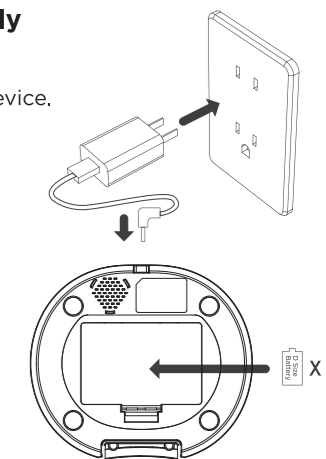
Plug the 5V/1A power adapter into the wall socket and connect the device.

Open the battery compartment at the bottom of the feeder and install 3 pcs of alkaline D-size batteries (not included).

When the LED light is on, it indicates that the feeder is powered on.

Note:

Batteries are not included. Make sure all parts are clean and completely dry before turning on the device.

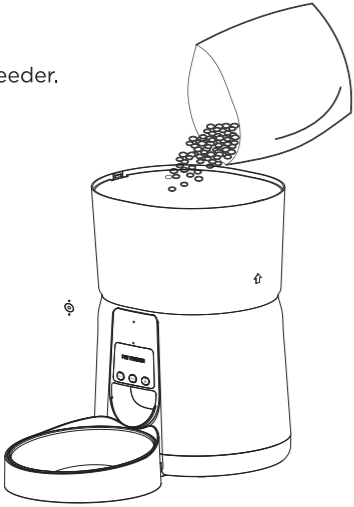


03 | Put pet food into food tank

Fill the food tank with dry pet food then close the lid.

Note:

Do not put canned or wet food into the feeder.
The recommended pet food size ranges
from 2-12 mm in diameter.



04 | Recording

Long press for 3s until you hear a "di" sound and start recording.
The recording time does not exceed 10s. After you release your hand, you will hear a "didi" sound, which indicates that the recording has been saved.
If you are not satisfied with it, you can repeat this step to replace the previous recording.

Note:

- 1) Recording will be played when pressing the recording button
- 2) Recording will be played when feeding



05 | Lock/unlock button

In the unlocked mode, long press for 6 seconds and the red indicator light will flash twice and lock the machine, then long press again for 6 seconds and the red indicator light will flash two times to unlock.

In the locked mode, you can press and hold the RESET button to restore the factory settings.

Note:

Pressing the feeding button in the locked mode does not work; the device must be unlocked for normal use. The actions taken in the APP do not work in the locked mode.



06 | Feeding

Manual feeding: short press to serve 1 portion.

Note: The feeding plan will not be affected.



07 | Reset

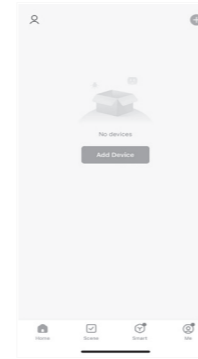
Switching the network configuration mode: When the power is turned on and the network is not configured, the blue indicator flashes quickly by default (Wi-Fi quick connection configuration mode), press and hold for 7 seconds until you hear three beeps. The red/blue indicator is always on for 6 seconds and then switches to slow flashing (hotspot network configuration mode). Repeat this to switch between the two network modes.



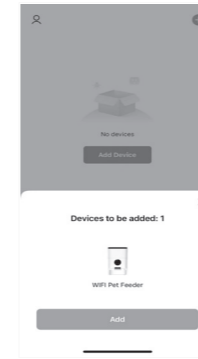
Smart Life APP specific operations



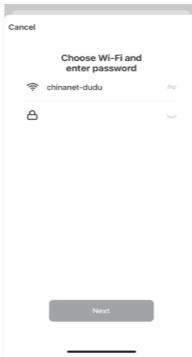
Download the App,
set up an account
and log in.



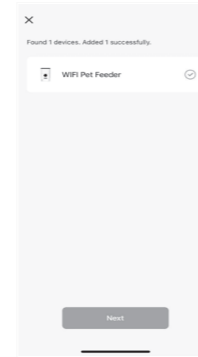
Enter the App and
click "Add Device".



First switch on Bluetooth
in your phone and allow
new connections. After
entering the interface,
wait for the device to be
found automatically,
then click "add".



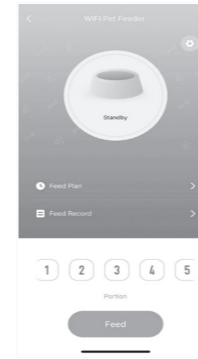
Enter your Wi-Fi password
(please use letters or
numbers, you cannot
use special symbols
for the password).



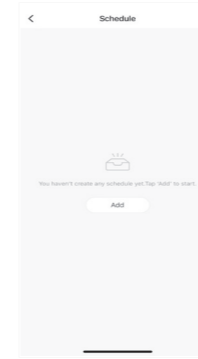
Wait for the device
to connect
to the network.



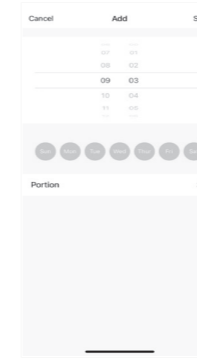
Then you can customise
the name of device and
click on the upper right
corner to enter
this step.



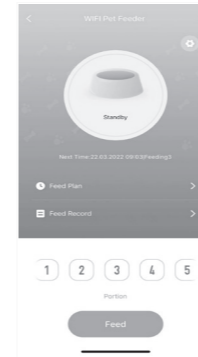
Enter the main interface;
you can choose the meals
and portions as needed.
Click "Feeding" to feed
immediately.



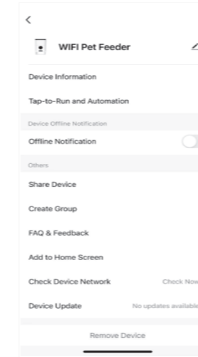
Click "Feeding Plan"
on the Main Interface
to add a feeding
schedule.



Add timing, set feeding
time and number of meals,
select the time, apply the
selection to each day,
and select the number
of servings per meal.



Go back to the main
interface. Click the icon
in the upper right
corner to enter
the settings option.



Then Click
"Shared Devices".



Click "Add Sharing"
to share the device
with multiple people.

Simple Troubleshooting

Q: Cannot be configured

A: 1) Make sure that the Wi-Fi name and password do not have special symbols, or have no more than 12 digits; only use a combination of numbers and letters. Note that the device does not support the 5G Wi-Fi signal, only 2.4G Wi-Fi signal.

2) Some software conflicts in the mobile phone can also cause the network connection to fail. Restart the mobile phone, close the non-system software that starts automatically when you turn it on, turn on Bluetooth in your phone and keep it close to the device, and then try to reconnect.

Q: The feeder is inaccurate or unable to feed

A: Check whether there isn't too much food in the food tank and whether the food outlet is not blocked; make sure to clean the food outlet and food channel regularly; check whether the battery is working and whether there is no leakage in the battery compartment.

Q: The feeder is offline

A: Check whether the distance between the feeder and the router at home does not exceed 10 meters (effective distance is 10 meters); do not place the device against the wall. Depending on the Wi-Fi characteristics, the Wi-Fi signal will drop sharply, and the connection will become unstable if the device and the router are separated by a wall, which will cause the product to be offline.

Q: No response when the feeder is turned on

A: First check that the device is plugged in and the switch is on. If they are all plugged in, check whether the power adapter and power cord are not damaged, and contact customer service.

Hotspot distribution network (optional)

Follow the instructions below to switch the network distribution mode to hotspot distribution network, the LED light will flash slowly, the specific operation steps are as follows:

1. Open the Smart Life APP, select "Add Device" - Add Manually - Small Appliances - Pet Feeder (Wi-Fi) - Enter the Wi-Fi Password - Click "Next", select Slow Flash - Click "Connect" - then go to connect SmartLife -XXXX Wi-Fi signal.

2. After connecting, return to the previous interface, and then enter the network configuration interface and wait for the connection.



Scan QR code
to visit our website

PetiGIO

Produced in China for **PetiGIO** sp. z o.o.
Ostródzka street 74H, 03-289 Warsaw, Poland

www.petigio.com