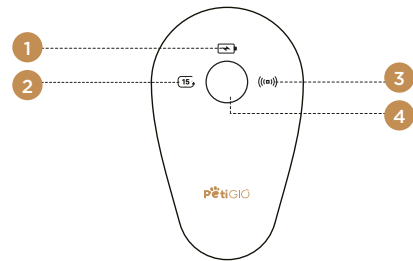


HOW TO USE

Panel

- Battery/Charging indicator
- Timer mode indicator
- Sensor mode indicator
- Faucet button



PANEL

Sensor Mode

The faucet will detect your approaching pet and activate the water flow for 20 seconds, encouraging your pet to drink water.

Timer Mode

The faucet will automatically activate the water flow every 15 minutes for 60 seconds. In the timer mode, the faucet will also activate the water flow for 20 seconds when it detects your pet passing a nearby.

Continuous Water Flow Mode

After switching on the device, connect the faucet to the power cord. While the battery is charging, the faucet will enter the continuous water flow mode.

Turning on the device

Press and hold the faucet button for 3 seconds to turn it on. After the device is activated, it is in the sensor mode by default.

Select Working Mode

Click the faucet button to switch between modes, refer to the indicator lights to determine the currently selected mode.

Charging

When there is enough battery, the battery/charging indicator will be green when the water flow is activated.

When the battery level is below 10%, the battery/charging indicator will flash yellow when the water flow is activated.

During charging, the battery indicator light will remain yellow and turn green when fully charged.

MAINTENANCE INSTRUCTIONS

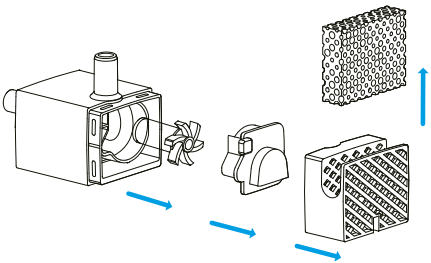
1. Replace the filter and the foam every 3-4 weeks.
2. Clean the pump and the fountain every 3-4 weeks.
3. To extend the life of the pump, add water before turning on the device.

How to clean the pump

Remove the pump cover and impeller cover one by one.

Note:

The foam pump filter is in the pump cover, change the foam every 3-4 weeks.



PRODUCT OVERVIEW

Issue	Solution
Water keeps spilling out of the water tray.	The filter might not be fully soaked. Soak the filter in a bowl of clean water (not in the water tank) for 5 minutes before the first use.
The pump stops working.	Make sure the water level is between MIN and MAX. The pump will stop working if it runs dry. Clean the pump, the water tank, and the water tray. If the above solutions do not work, please contact us at petigio@petigio.com
How often should I change the filters? Where to get them?	Replace the filter at least once every 3-4 weeks. to purchase new filters please contact PetiGIO.
Why do I need to soak the filter before first use?	The filters absorb more water (and therefore clean more water) when they are wet and expanded. Soaking the filter removes particulate matter that might have otherwise settled on the filter.
Water flow speed slows down.	During the first use (or the first use after a long break), the water pump needs to discharge air, it is normal for the water flow speed to temporarily be lower. If there is dirt in the pump, refer to "How to clean the pump" section of this user manual.
No water after installation	This product uses a wireless pump, and the water pump is powered by induction. Make sure the power supply is connected, and the water tank, the base and the water pump are installed correctly. Refer to the "How to use" section of the user manual.
Black residues and dirt appear in the water tank and on the filter	Make sure that clean water is replaced regularly. Make sure to soak and wash the filter in advance.

STRESS-FREE PET OWNERSHIP



Scan QR code to visit our website



Produced in China for **PetiGIO** sp. z o.o.
Ostródzka street 74H
03-289 Warsaw, Poland

www.petigio.com

SAFETY PRECAUTIONS

! Warning

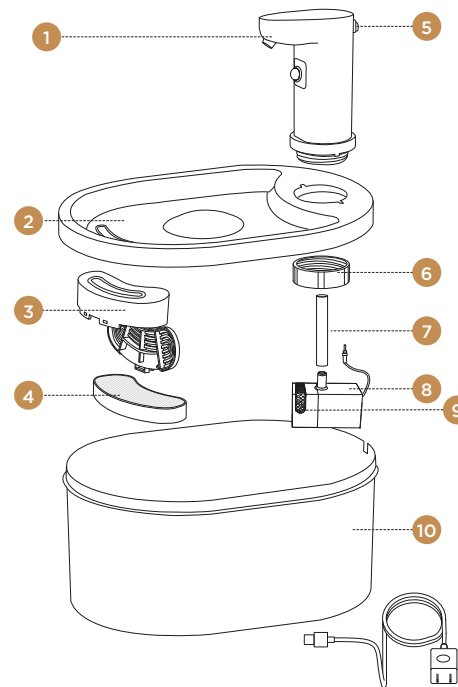
- Dispose of all packaging materials properly. Keep the polybags out of reach of children and pets as they pose a suffocation hazard.
- Do NOT allow children to play with, in, or around the pet water fountain.
- To avoid injury, keep close supervision when the device is used near children.
- Do NOT use the water fountain with pets that are unable to reach the water tray or have any physical disability.
- Do NOT place any foreign objects in the water tank.
- Do NOT disassemble the pet fountain in a manner other than the one described in this User Manual.
- Use the pet fountain ONLY for its intended purpose.
- Use only the accessories recommended or sold by the manufacturer. Using any other accessories may create unsafe conditions. Do NOT modify the pet fountain.
- Do NOT use the device if the unit is malfunctioning or has been damaged. Do not attempt to repair the device on your own. Contact our customer service immediately for further instructions.
- Be sure to disconnect the power supply for safety when the device is not in use.
- Disconnect the power supply before maintaining and cleaning the machine.
- Always unplug the device when not in use; or before assembling or disassembling the device and before cleaning.
- The power adapter and power cord must not be immersed in water during cleaning.
- This product is for indoor use only.
- This product must not be used without water.
- Never pull the electrical power cord to remove the plug from the wall outlet.

- If the plug gets wet, turn off the power supply of that wall outlet. Do NOT attempt to unplug the device.
- Check the device after assembly. Do NOT plug it in if there is water on the contact points or on the plug.
- To avoid tripping over the device, always position the power cord out of the way.
- Do not use the device in the bathroom.
- Replace the filter at least once every 3-4 weeks or when the flow rate becomes noticeably reduced. For two or more cats, you may need to replace the filters more regularly, as the device might get blocked more often.
- Do not put any parts of the device into the dishwasher, as there is a risk of deformation.

BE ADVISED

- Do NOT allow pets to chew on or swallow any parts of the device. If you are concerned about the power cord, purchase a cable conduit (a hard-plastic protector) available at any hardware store to protect the power cord.
- If an extension cord is necessary, a single unit with a proper rating should be used.
- Do NOT install or store the pet water fountain in a place where it will be exposed to severe weather conditions or temperatures below 0°C / 40°F.
- Read and observe all important notices listed on the pet water fountain and in the packaging.

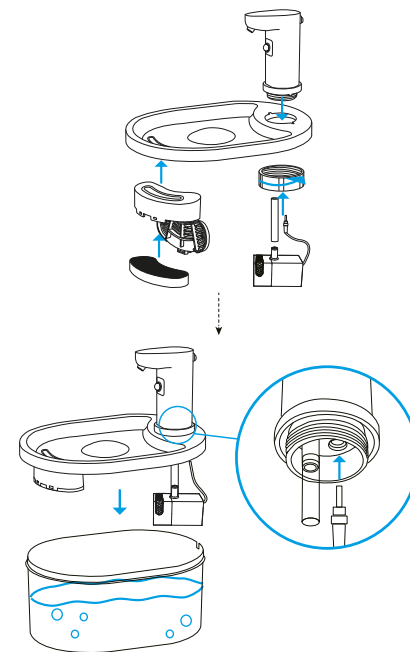
PRODUCT OVERVIEW



- | | |
|------------------|-----------------|
| 1. Faucet | 6. Sealing Ring |
| 2. Water Tray | 7. Water Pipe |
| 3. Filter Tray | 8. Water Pump |
| 4. Filter | 9. Pump Filter |
| 5. Charging Port | 10. Water Tank |

HOW TO ASSEMBLE

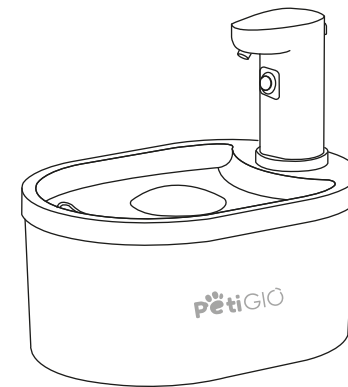
1. Insert the faucet into the opening of the water tray and tighten it with the sealing ring to secure it.
2. Connect the water pump to the water pipe and plug the power cord of the water pump into the circular DC socket on the bottom of the faucet.



PETI-151

EN

PetiGIO



Peti-to-Eat

Automatic pet water fountain

USER MANUAL

Peti-to-Care Automatic water fountain for pets PETI-150
Before using this product, read this user manual carefully and follow the instructions for proper use.
Keep this user manual for future reference